

# From Coffee Jar to Christmas Candle Holder with Glass Mosaics



Create this colourful Christmas candle holder from an old coffee jar, simply and easily with Glass Mosaics.

## What you need...

- Empty Glass Jar
- Glass Mosaic Tiles
- Leponitt Mosaic Cutters
- Silicon
- Icy pole sticks
- Rubber Grouter
- Black Tile Grout
- Latex Additive
- Rubber Gloves
- Safety Goggles
- Bucket, Sponge & Mixing Container



## How to...

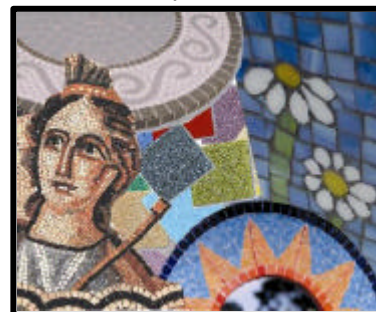
1. Clean the coffee jar thoroughly, so that you have a clean surface to adhere the tiles.
2. Draw your design onto a piece of paper. Place the design on the inside of the jar as a guide.
3. Use your Mosaic Cutters to snap the coloured tiles into quarters. It is a good idea to snap up all the tiles you need for the project so that you can work quicker through the gluing stage.
4. Starting with the candle part of your design, butter the back of the coloured glass tiles, one at a time and place them onto the jar. Use just enough silicon to cover the back of the tile. Press down firmly to assure that there are no air bubbles underneath. If the silicon squeezes up between the edges of the tile, wipe away with a skewer. Place the tiles that make up the candles tight together to accentuate your design.
5. Once the jar is filled in with tiles and you are happy with the design leave to dry over night. It is essential that you are certain that the tiles are adhered properly to the jar.

Put your gloves on for the next process.

6. In a medium container, pour in the grout and mix with a small amount of latex additive at a time. Mix into a toothpaste consistency. The grout mixes up like icing sugar, so add a little latex at a time. Spread the black grout over the surface with the rubber grouter, pressing the grout into the gaps. Scrape the excess off with the rubber grouter. Wait about 10-15 min and use a damp sponge to wipe the grout off the tiles but not out of the gaps! Allow the grout to dry and polish with a damp soft cloth again to remove any residue that is left.

*TIP: It is a good idea to use translucent glass so that when the candle is lit you get a brilliant show of colour.*

All the products used in this project are available from your Craft, Hardware or specialist Stained Glass store.



For more information on  
Glass Mosaics  
Free Call 1800 635 137