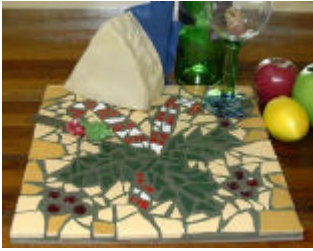


## Candy Cane Platter

### Materials/tools required:

- ❖ **Glazed Ceramic Tile:** Platter Base 30 cm x 30 cm
- ❖ **Brick or thick paver**
- ❖ **Hammer**
- ❖ **Plastic insert file sheets**
- ❖ **Storage containers** recycled jars, plastic tubs etc.
- ❖ **Ceramic tiles/china**  
**red/yellow/lemon/green/white:**  
 OR your colour choice. Purchase tiles of the same thickness to create a level platter. A red china saucer was used for the candy canes, but try and obtain tiles for a very smooth finish.
- ❖ **Blu Tak/Tracing Paper (Lunch wrap)**
- ❖ **Pencil Carbon Paper**
- ❖ **Glass gems** Red gems for berries if possible.
- ❖ **Tile adhesive** **Refer Adhesive section (page 12)**
- ❖ **Felt Pens/Pencils** Red/green
- ❖ **Newspaper/plastic** Protect the work area
- ❖ **Cotton buds** To apply adhesive and clean tiles
- ❖ **Felt/Cork pads** Platter feet



### APPLYING THE MOSAIC



**PATTERN**

- ❖ Print the pattern provided or sketch a design. Trace the pattern onto tracing paper, then use carbon paper to transfer the pattern to the non-glazed side (back) of the tile. (If no carbon paper available, cut out the printed pattern and trace the outline onto the platter.)
- ❖ Using a thick felt pen, define the grout areas edging the pattern as shown. Think of the thick lines as part of the pattern. Grout will fill these lines and emphasize the leaves and candy-canes.
- ❖ Temporarily blu-tak holly (glass gems).
- ❖ Using a felt pen/coloured pencil roughly colour the pattern as a tile colour guide.



**BREAKING TILES**

- ❖ Put a thick paver in plastic rubbish bag to protect the work area.
- ❖ Place first tile to be broken a plastic insert folder sheet. This stops shards (tile bits) from flying around the room and protects you. Safety glasses are recommended.
- ❖ If plastic insert sheets unavailable, place plastic/plastic bag or newspaper over the tile before hammering. Regularly to check on how the tiles are breaking for a variety of shapes and sizes.

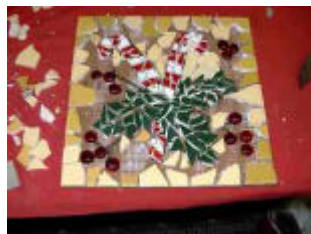
## Candy Cane Platter



- ❖ Break the tiles with gentle hammer thuds...try to get a selection of shapes but do not damage the tops of the tile by over-hammering! Move the broken tile in the bag to hammer individual pieces. Separate tile pieces into colours and store in jars/bowls/any suitable containers. (recycled yoghurt containers, margarine containers are very suitable....even cut down 2 litre milk containers and soft drink bottles!).
- ❖ If china is used, break gently into small pieces, however, if possible avoid using china and use tiles of all the same thickness -the finished mosaic will be much more even and the tesserae much easier to adhere...however, practise makes perfect!



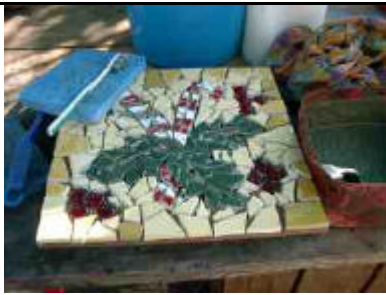
### APPLYING TILES:



### BORDER & BACKGROUND

- ❖ Practise placing tiles on the pattern ensuring no pieces touch. Leave small grout gaps. (approx spaghetti size).
- ❖ Fill in the red candy stripes. Place straight edged tiles where possible on the outline of the candy cane and fill in the middle with small pieces.
- ❖ **Please read the adhesives section (page 12)**  
White pre-mixed tile adhesive (mastic) was used in this project.
- ❖ Butter the back of each piece of tile and place on pattern or spread adhesive directly, small sections at a time and place tile directly on the adhesive (this is the fastest method). Fill in border in a mix of yellows using straight edges of tile for outside border edge. Place border tiles with a fairly small grouting gap and keep platter tile edge straight. Use a ruler to rest against the edge of the platter to assist in keeping the border tiles straight.
- ❖ After placing border tiles, fill in the background of platter in hammered pale lemon tiles (or desired colours).  
**Allow the mosaic platter 24 hours or more until adhesive is dry.**

## GROUTING



### YOU NEED:

- ❖ **Plastic container**
- ❖ **Rags** - t-shirts or lint-free rags
- ❖ **Paper towel**
  
- ❖ **Grout- Grey, Sanded (Wide-Jointed) powdered grout** – small bags or larger bags of 10/20 kg. Grout is inexpensive so it's economical to buy a larger bag.
- ❖ **Spoon/knife/scrapper to mix**
- ❖ **Sponge**
- ❖ **Bucket** /Water
- ❖ **Plastic/Newspaper**
- ❖ **Rubber gloves/apron**
- ❖ **White vinegar**
  
- ❖ **Music – good for the soul**
- ❖ **Chocolate/why not?! Hat**
- ❖ **Sunscreen/Insect Repellent (don't laugh!)**
- ❖ **Old Toothbrushes**

- ❖ Read instructions on the grout package. Purchase sanded grout (wide-jointed) grout. If unsure, check with tile/hardware shop and ask for assistance. Allow time to relax and work on the grouting without interruption. Put the phone on answering service!
- ❖ Spread newspaper or plastic over work area to allow easy cleanup.  $\frac{3}{4}$  fill bucket with water. Have clean lint-free rags and paper towel handy. Wear rubber gloves and a paper dust mask whilst measuring the grout.
- ❖ For sensitive eyes, wear safety glasses. Wear old clothes and/or an apron. (Extra protection: Large bin bag – cut hole for head and arms and pop on!). Great fashion statement!
- ❖ Measure 4 cups grey sanded (wide-jointed) grout in a clean plastic container and slowly add water. Mix with an old spoon (I have been known to grab a tree branch!) until consistency of peanut butter or cake frosting. No lumps!
- ❖ Allow grout to slake (ie rest) for at least 10 minutes, which allows the chemicals to react in the grout. Test to see if the grout will cling to the underneath of a knife. This is a good indication it is the correct consistency. If the mixture is too wet, add more grout powder. The platter is ready for grouting!
- ❖ Place a handful of grout on the platter. Using gloved hands (I like to double-glove), push the grout down into the grout spaces, making sure the grout reaches to the base of the platter.
- ❖ Spread excess grout across the project using a damp sponge to help smooth it down into the gaps.
- ❖ Keep rinsing and wringing the sponge out well in the bucket of water. Wring the sponge almost dry each time it is rinsed.
- ❖ After smoothing grout over the platter, including the sides of the tile, wipe off excess and wait for the grout to start curing...about 5-10 minutes. If working outside, remember to wear a hat and sunscreen and work in the shade where possible. Cover remaining grout in container, with plastic or a lid to keep it from drying out.
- ❖ After a haze appears on the tile surface, dampen the sponge or paper towel and start wiping off the excess grout until the project is smooth and all tiles have been uncovered. Keep rinsing and wringing out the sponge to remove excess grout. Do not wet the project too much or the grout will wash out. At this stage, use more grout to patch any over-wiped or patchy areas.
- ❖ Don't wipe away so much grout that sharp edges appear. Test gently with gloved hand to make sure that there are no sharp parts. Add extra grout if

## Candy Cane Platter



### Please Note:

**These project notes provide a very basic guide for the platter projects only.**

**Mosaic art is very exciting and if you wish to make more mosaics I recommend a mosaic class and mosaic books!**

**After grouting, rinse hands in white vinegar to restore softness.**

necessary to cover sharp areas. If all the tiles used in the project were the same thickness and adhered evenly, this should not be a problem.

- ❖ An old toothbrush assists to remove grout.
- ❖ Allow grout to firm then polish up! Wipe over and polish with old t-shirts or similar lint-free fabric. If a haze appears on the tiles, don't worry. This haze is easily removed with white vinegar after the grout has dried.

### Hint: What to do with left-over grout?

- ❖ **Left-over grout cannot be stored.**
- ❖ Wrap excess grout in newspaper and dispose of in rubbish bin or use as follows:
- ❖ Spray biscuit cutters (eg gingerbread man, stars, shapes) with non-stick oil spray.
- ❖ Add a good dose of Weldbond (**Refer Adhesives Notes page 12**) to the grout mix to make the grout very strong. Place the oiled moulds on alfoil or clingwrap and fill level with the grout mix. Smooth off.
- ❖ Push a toothpick or small piece of wood (sprayed with the non-stick cooking spray) into the mosaic at the appropriate hanging point. When the grout is set (at least 24 hours) remove the toothpick and string with fishing line, rope etc...it's up to you!
- ❖ Leave to dry a few days.
- ❖ These shapes can be used on other mosaic projects such as pots etc for 3-D effect or painted/covered in mosaic and hung as mobiles.
- ❖ Another idea - make shapes using your hands – flower petals, leaves, snakes...use your imagination!

### Hint: Project preparation:

The ceramic glazed tile bases used for the mosaic Christmas Platters do not require pre-sealing. If you wish to mosaic wooden trays or porous projects, these items must be sealed and prepared properly before commencing the mosaic! This is extremely important or all your beautiful mosaic art may be affected by warping etc. Special treatment is required for outdoor mosaic art and water mosaic features. Please contact Sandy for advice, attend a mosaic class or purchase mosaic books. **When in doubt – Find out!!!!**

## SEALING THE PLATTER

### YOU WILL NEED:

- ❖ **Sealer:** Ask your HardwareStore or Tile Shop for a suitable brand sealer.

Try **TileLab** sealer for an invisible finish- water based.

Try **Solver Slate Sealer** for a shiny, glossy finish, which enhances the grout colour.

- ❖ **Paint brush**
- ❖ **Rag**
- ❖ **Plastic or newspaper**
- ❖ **Gloves**

### ADDING THE PLATTER FEET!

**To protect the platter and table/bench tops, purchase sticky felt pads from Hardware Stores. Adhere to base of platter.**

**Or**

**Use liquid nails or strong glue to adhere 4 glass gems for a final professional finish!**

### Why seal?

- ❖ Using a sealer provides waterproofing and stain protection for the finished mosaic platter. Sealer keeps dirt/food and grime from permanently staining the grout and aids in keeping water out of grout cracks. Most quality grouts have mould inhibitors in the formula, but the sealer adds extra protection.
- ❖ If a final sealer is not applied, scrub the mosaic with a mild household cleaner in a similar method to cleaning bathroom tiled areas.


### APPLYING THE SEALER:

#### Read the product instructions on the tin of sealer.

- ❖ Do not apply sealer until the platter/grout is completely dry! Usually allow a couple of days after grouting.
- ❖ Spread newspaper or plastic to protect work area.
- ❖ Put the platter on a smaller item to raise the platter off the bench. This makes it easy to apply the sealer to the sides of the platter. If a lazy-susan turntable is available, it enables easy turning of the project both when working on the design and sealing. Clean and polish the tile to remove all excess haze – damp a lint-free rag with white vinegar.
- ❖ Apply sealer in a dust-free area away from any breezes.
- ❖ Decant some sealer into a glass jar - don't contaminate the full tin of sealer by returning a dusty brush etc to the tin of sealer.
- ❖ If using TileLab Sealer you may prefer to put the sealer into a spray bottle.(do not do this with the Slate Sealer).
- ❖ Use a clean paint brush to apply the sealer, don't use cheap brushes that the bristles fall out of, as it is most annoying if the bristles stick to the sealer on the tiles. Make sure to apply sealer to the 6 platter surfaces –top/sides/base.
- ❖ **Hint:** Buy a paint brush that fits into a large pasta-sauce jar. I decant enough sealer to cover the brush bristles and keep the brush stored in this jar ready for the next project.)
- ❖ **Solver Slate Sealer:** apply the sealer thinly so that it is very even, but has soaked into the grout and covered the tiles evenly. Do not touch the Solver Sealer, as it will leave fingerprints etc. Do not wipe with a rag. This sealer dries quickly.
- ❖ **Tile Lab Sealer:** keep applying till the grout won't absorb any more sealer, then wipe excess off with a clean lint-free rag.
- ❖ Allow sealer to dry. Give platter another coat of

Candy Cane Platter

	<p>sealer every six months, if necessary.</p> <ul style="list-style-type: none"> <li>❖ <b>Sign and date your platter on the back with a permanent marker pen... perhaps compose a message that will become a wonderful memory!</b></li> <li><b>CONGRATULATIONS</b> on a job well done!</li> </ul>
--	---

<b>About ADHESIVES:</b>	<b>General Information</b>
Mastic – used in both projects.	<p><b>Pre-mixed tile adhesive.</b> (AbaMastic used in these projects). Fantastic product, non-slip, allows pillowing, long shelf-life, great for vertical projects. Always read product information. Ask your Hardware Store or Tile Shop for assistance with products.</p>
Liquid Nails or similar.	<p>Handy to adhere tiles that may pop off during grouting. May be used for whole project. Wonderful for 3-D or large, unusual items. Very strong. Fast setting...Allows thinner tiles to be pillowed up to height of the thickest tile (if different thickness of tile have been selected for the project). Work in a well ventilated area. Can be messy.</p>
<p><b>Weldbond</b></p> 	<p>Very strong non-toxic glue. Dries clear. Ideal for glass mosaics. Does not allow pillowing of tiles for even surfaces.</p> <ul style="list-style-type: none"> <li>• Excellent product.</li> <li>• Not good for vertical work as it slips.</li> <li>• Makes a wonderful pre-sealer for porous projects, such as wood and pottery. Mix 5 part water to 1 part Weldbond for a pre-sealer.</li> <li>• Not to be used as the final top sealer of a project!</li> <li>• Visit <a href="http://www.franktross.com">http://www.franktross.com</a> for product information.</li> <li>• Purchase at Hardware Stores or contact Sandy.</li> </ul>
<b>Thinset Tile Adhesive</b>	<ul style="list-style-type: none"> <li>❖ Usually grey. Purchased as a powder to mix with water. Very strong, reasonable price, allows pillowing for even surfaces - many uses, especially good for push-in mosaic method. Also may be used for grouting. Ask for advice/information at tile/hardware stores.</li> </ul>
Silicone	<ul style="list-style-type: none"> <li>❖ Dries clear, good for vertical mosaics, allows pillowing of uneven tesserae.</li> <li>❖ Work in a well-ventilated area.</li> <li>❖ Refer instructions and information on packaging.</li> </ul>
<b>About GROUT:</b>	<p><b>Project No 1 – sanded grout</b>  <b>Project No 2 – pre-mixed unsanded grout</b>          This is a very brief overview. Refer mosaic books/classes/internet or Sandy for detailed information..</p>

